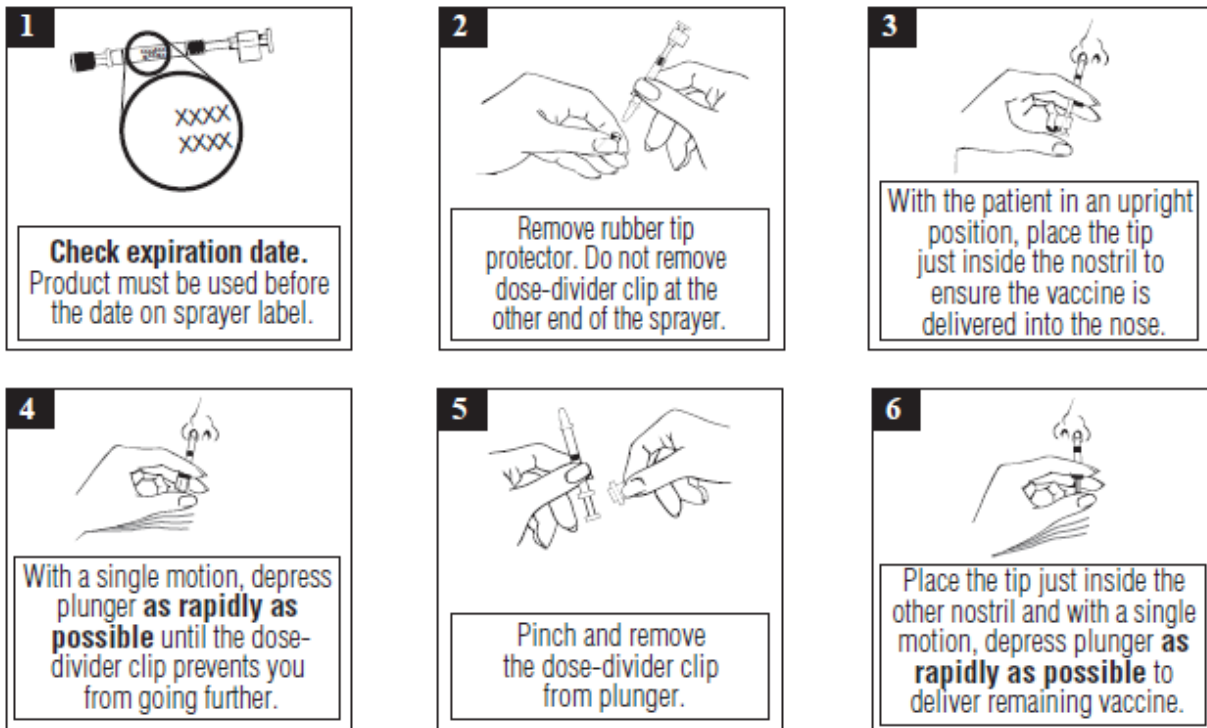


Figure 1



 **DO NOT INJECT. DO NOT USE A NEEDLE.**

Note: Active inhalation (i.e., sniffing) is not required by the patient during vaccine administration

3 DOSAGE FORMS AND STRENGTHS

Pre-filled, single-dose intranasal sprayer containing 0.2 mL suspension [See Description (1)].

4 CONTRAINDICATIONS

4.1 Hypersensitivity

Influenza A (H1N1) 2009 Monovalent Vaccine Live, Intranasal is contraindicated in individuals with a history of hypersensitivity, especially anaphylactic reactions, to eggs, egg proteins, gentamicin, gelatin, or arginine or with life-threatening reactions to previous influenza vaccinations.